



Naima Dadabhoy - Mapping the Mismanagement (detail)

BOTANY OF DESIRE

Curated by Roohi S. Ahmed

Tuesday, 12th September, 2017

Exhibition will continue until 21st September, 2017

Abdullah M. I. Syed | Alia Bilgrami | Aliya Yousuf
Amin Gulgee | Asma Ahsan Khan | Danish Ahmed
Durriya Kazi | Farah Mahbub | Manisha Gera Baswani
Meher Afroz | Mohammad Ali | Mona Naqsh
Naima Dadabhoy | Noorjehan Bilgrami
Shahana Munawar | Shazia Qureshi | Sumaira Tazeen
Usman Saeed | Yasmeen Salman



GALLERY

KOEL

F-42/2 Block 4, Clifton, Karachi, Pakistan | Tel: +92 21 35831292

Email: gallerypoel@gmail.com | Web: www.koelgallery.com

Curatorial Note

It all began in the garden, and then came expulsion!

And ever since, we have had emotional affinity towards nature and an intrinsic desire to create gardens in order to re-establish our severed link. Nature is part of our identity as it inspires our creativity and nurtures our mind, body and soul. We have a desire to be near nature.

However, with the rise of ever-growing urban structures and mega concrete and glass cities, our direct connection with nature, once again, has been severed. Instead, small gardens and indoor plants have replaced much of the scenic beauty of nature. Subsequently, interior plants have become essential for our indoor living. They appeal to our aesthetic sense and well-being and establish a link between the indoor and outdoor. Today, the indoor plant “has taken on more complex implications than a simple symbol of nature. Through its living presence & familiarity, the plant has transitioned into a subject that can go as far as acting as a stand in for a human being.” (*KahnÂ, Faye. A Plant as Familiar: The Use of Plants in Contemporary Art*)

In art discourse, from Monet to Sadequain, artists of the early twentieth century explored garden and plant themes. This exhibition furthers this discussion and traces the emergence of plants in their many innovative forms through a period of social, political and economic change in contemporary art of Pakistan. The exhibition seeks to reveal unique and extraordinary interpretations of plant life across Pakistan, and will present the artworks imbued with ideas of cycle of growth, reproduction, decay, renewal and hope.

– Roohi S. Ahmed *September 2017*



Currency of Love - IV (15 panel composition) 2016

Abdullah M. I. Syed

Pure pigment print on cotton rag of plucked damaged and dead money-plant leaves mended with used and new Saudi Riyal, Pakistani Rupees and US Dollar banknotes

Installation dimensions variable, 5 x 7 inch each (13 x 18 cm)



Mardi Gras 2017 (8.5 x 910.5 inch)



Tulip Mermaids 2017 (10.5 x 9 inch)

Alia Bilgrami

Gouache, wallpaper, tea wash
and watercolour on vasli

Gharondey 2017

Aliya Yousuf

Kite Paper, cast and modelled
with Layee

Installation Dimensions
variable



Char Bagh - V 2017

Amin Gulgee

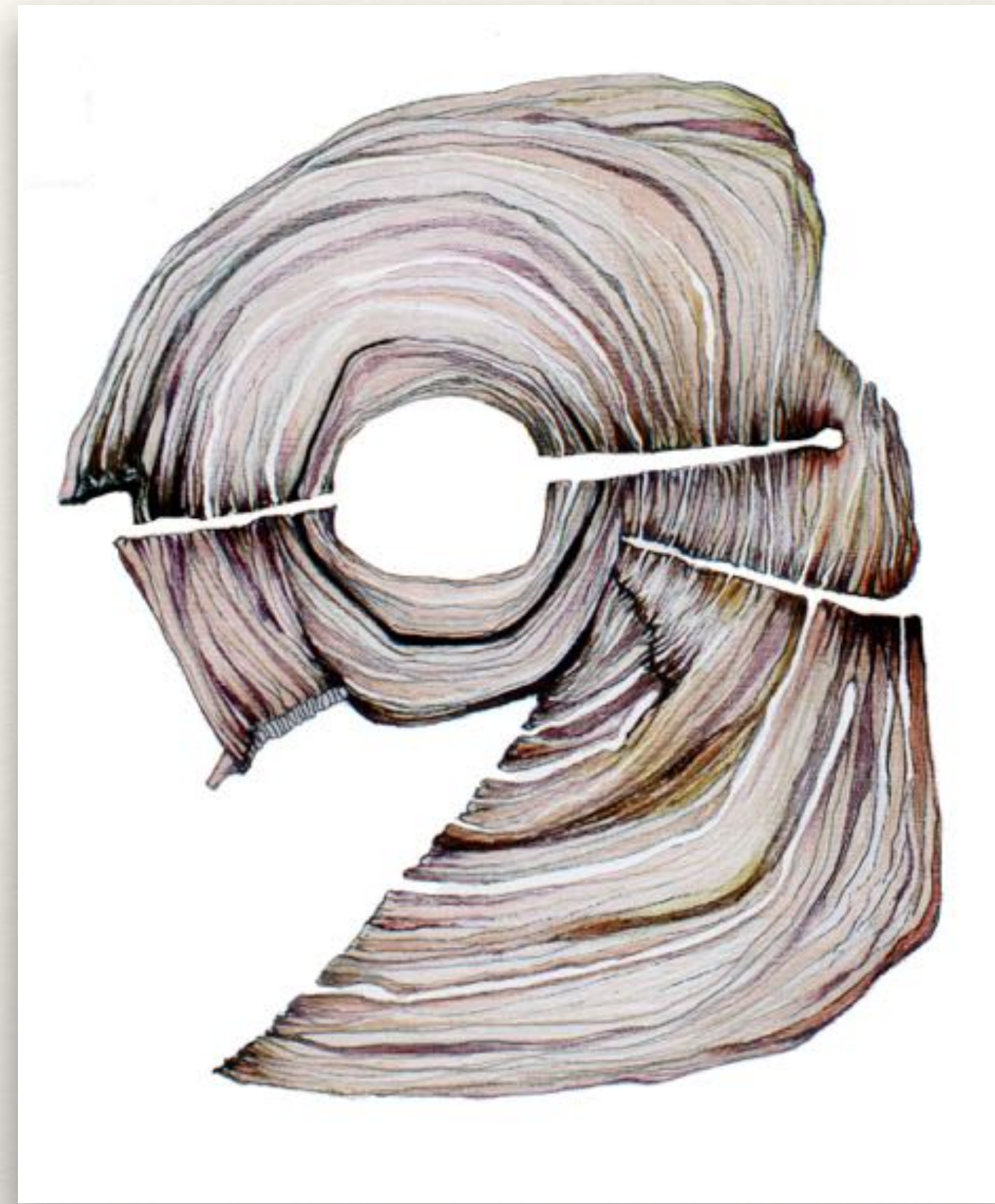
Copper, steel and mirror

69 x 69 x 24 inch





Inside the Seed 2017



Inner Tree Compass 2017

Asma Ahsan Khan

Mixed-media on canvas

18 x 24.5 inch each



Untitled I, II & III 2017

Danish Ahmed

Ink & water colour on tea
stained paper

11.5 x 15 inch each

Blueprint for Love; Bonds, Knots and Roots
2006

Durriya Kazi

Sepia print

20 x 32.5 inches



Zahir-o-Batin I, II, III & IV 2017

Farah Mahbub

Canson Infinity Rag Photographique 210 gsm (is a museum grade white Fine Art and archival photo paper)

I, II & III : 19 x 19 inch each

IV : 20 x 40 inch

Editions of 3





Stillness 2017

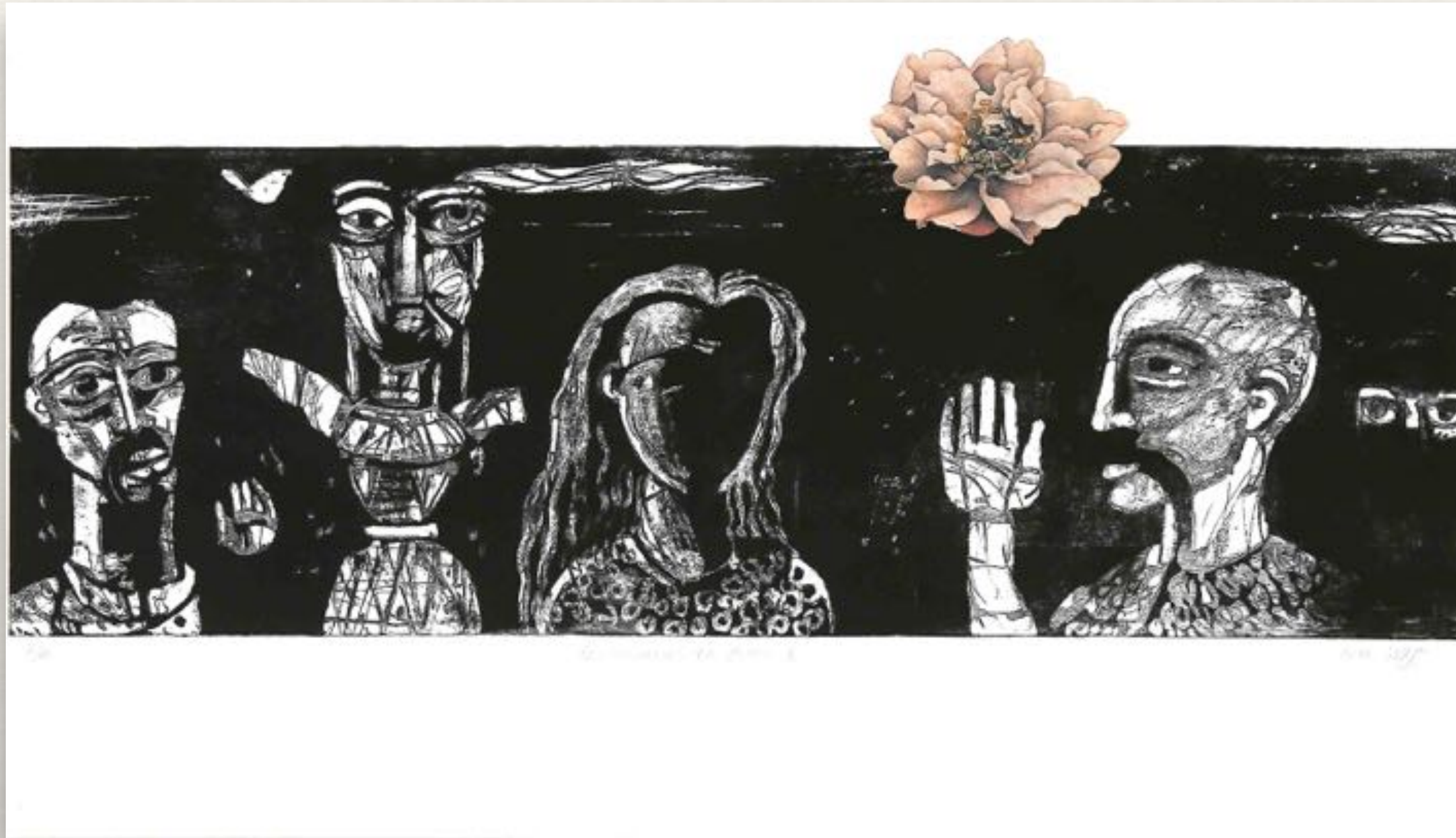


Womb 2017

Manisha Gera Baswani

Water colour and gouache on
paper

7 x 7 inch each



Reminiscences of a Dream I 2014



Reminiscences of a Dream II 2014

Meher Afroz

Etching on Somerset

28.4 x 9.3 inch each

Listening to my breathing 2017

Muhammad Ali

Performance

Performed continuously for 3 hours at
the opening of the exhibition





Sermon I 2006



Sermon II 2017

Mona Naqsh

Drawing with graphite pencil (L)
18 x 24 inch

Oil on Canvas (R)
20 x 26 inch



Mapping the Mismanagement I, II (detail) 2009



Mapping the Mismanagement III ongoing

Naima Dadabhoy

Fungus Impressions from coffee and
tea and coffee stains (T)

52 x 18.5 inch , 57 x 18.5 inch

Dried up botanical specimens in glass
containers, fungus and skull

Dimensions variable

From Notes 2017

Noorjehan Bilgrami

Leaves of indigo ferra tinctoria, indigo dye,
graphite, silver leaf on paper

10.5 x 14.6 inch (L)

26 x 40.5 inch (R)

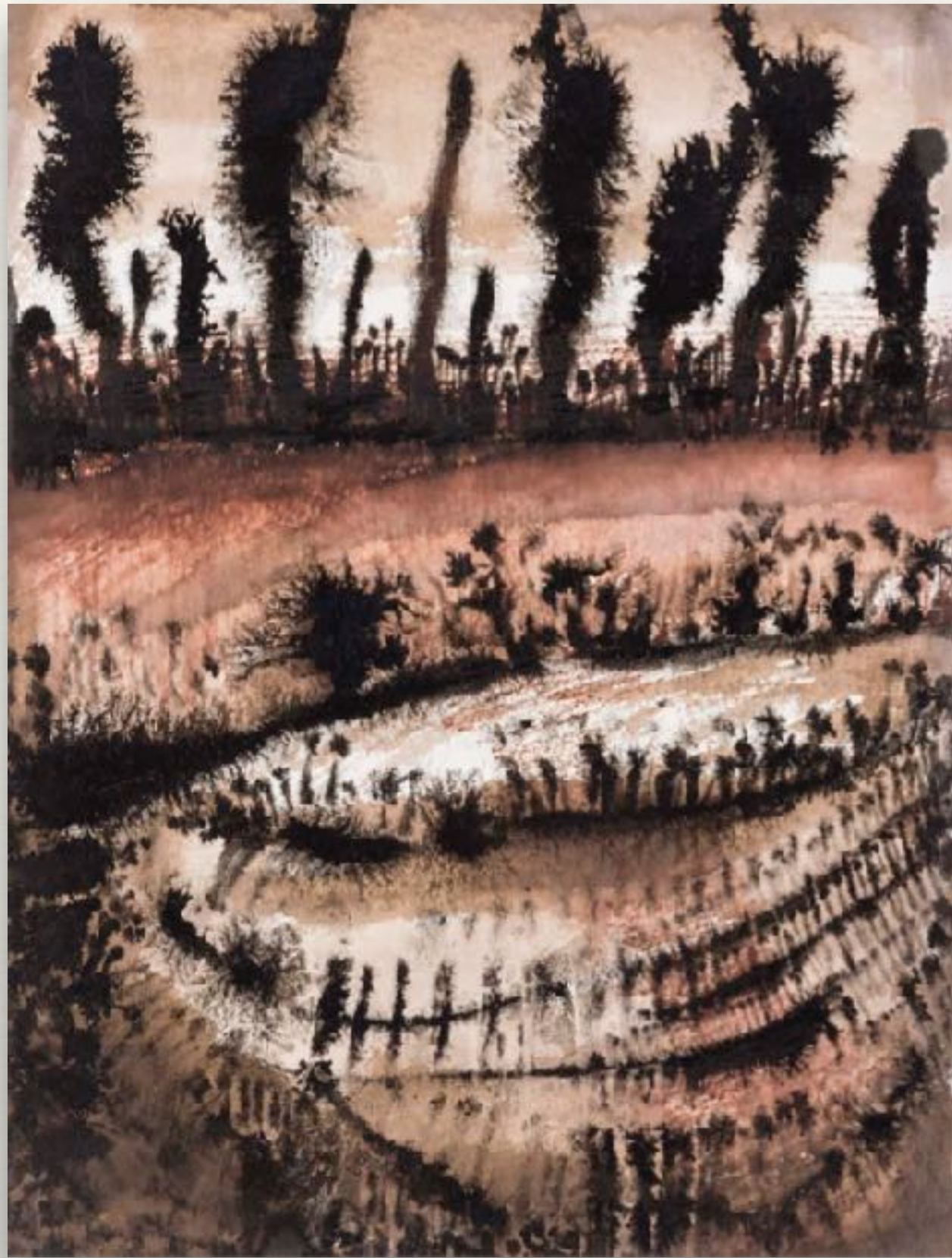


It is not Fetish 2017

Shahana Munawar

Brass with patina





Illusion of Permanence 2017



Beyond Perception 2017

Shazia Qureshi

Ink on Paper

9.5 x 12.5 inch each

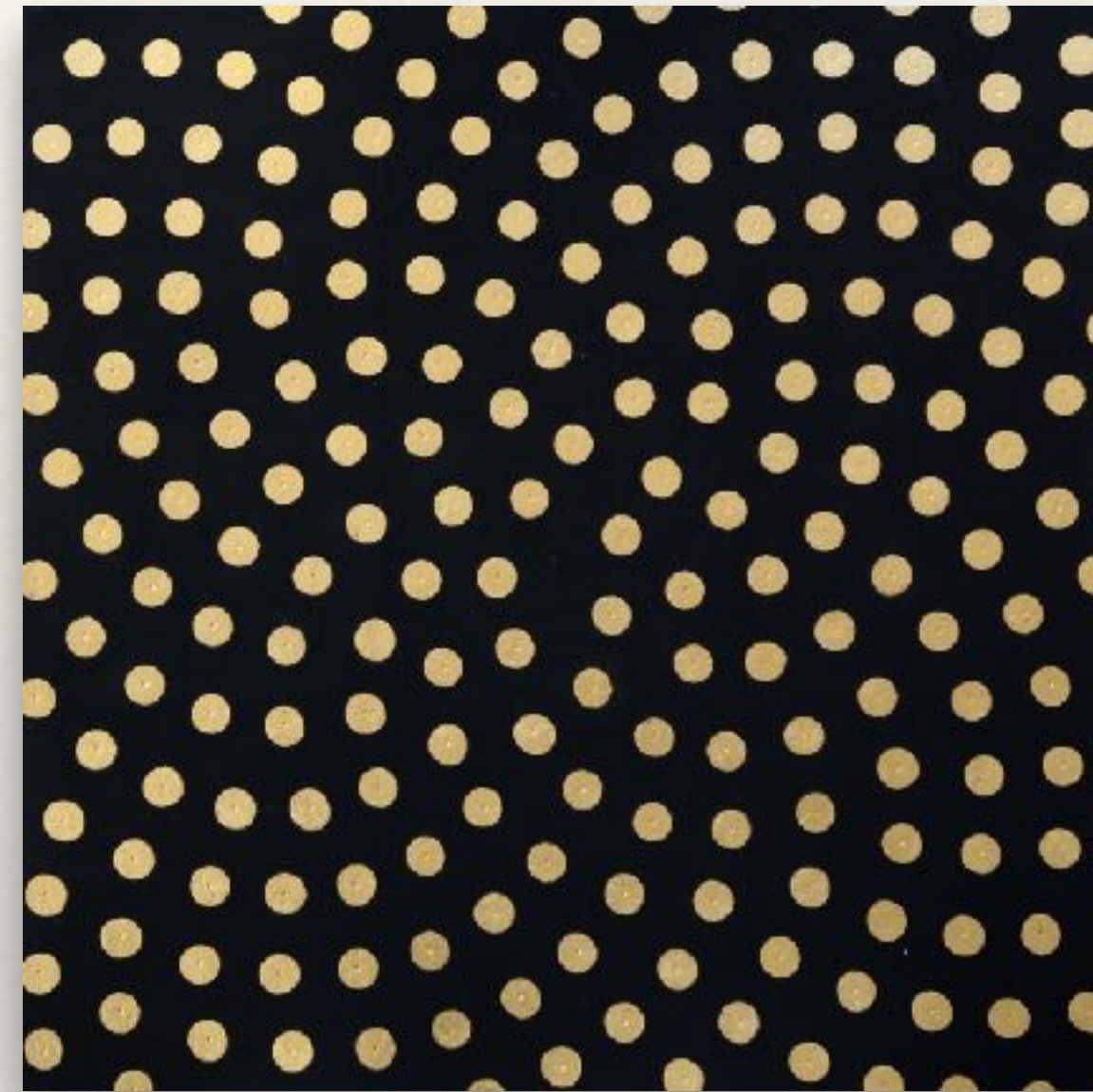
Healing or surviving? III & IV 2016

Sumaira Tazeen

Opaque Water based Pigment and Gold
leaf on Vasli (Archival Paper)

(L) 11.8 x 11.8 inch

(R) 11.8 x 15.7 inch



Gardenfinds IV 2017

Usman Saeed

Ink and watercolour on paper

18 x 14.8 inches





Mirror to mirror through myself I see you, You see me 2017

Yasmeen Salman

Laser-cut on Chamois silk, 80
gsm

18 x 36 inch